

# "Floor Screen 24" portable self standing clear barrier partition - 24" wide

DSfs-24

The Floor Screen 24 is a self-standing 23.75" wide barrier with 1.5mm (approx. 1/16") thick optically clear polycarbonate viewing panel - plus, it's portable and can be set up wherever needed. It has an unobtrusive, professional look that's ideal for medical office waiting rooms, corporate reception areas, libraries, and flexible work spaces.



We are continually improving and modifying our product range and reserve the right to vary the specifications without prior notice. All dimensions and weights quoted are approximate and we accept no responsibility for variance. E&OE.

## features and benefits:

- aluminum tube frame
- portable, movable, & quick to set up
- 2 heights available: 66.5" or 92.63"
- comes with 1.5mm thick optically clear polycarbonate viewing panel
- soft carry bag included
- optional printed graphics available
- 3 foot and 4 foot wide models also available
- one year limited hardware warranty against manufacturer defects

## dimensions:

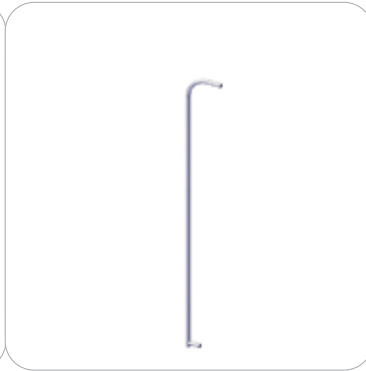
Hardware	Graphic
<p>Assembled unit: 25"W x 93"H x 15"D 635mm(w) x 2337mm(h) x 375mm(d)</p> <p>Assembled weight (for tall height with clear viewing panel): 7.0 lbs / 3.2 kg</p>	Optional printed graphics available
<p>Shipping</p> <p>1 carry bag and 1 viewing panel</p> <p>Shipping dimensions (box) - frame: 33"l x 11"h x 3"d 839mm(l) x 280mm(h) x 77mm(d)</p> <p>Approximate shipping weight - frame (including carry bag - clear panel extra): 7.7 lbs / 3.5 kg</p> <p>Shipping dimensions - clear panel (tall): 22"l x 18"h x 18"d 559mm(l) x 458mm(h) x 458mm(d)</p> <p>Approx. shipping weight - clear panel (tall): 8 lbs / 3.7 kg</p>	<p><b>additional information:</b></p> <p>Graphic printing choices: - full colour wispy pattern graphic, or - light grey etched glass look wispy pattern graphic, or - custom graphic</p>

# Included In Your Kit

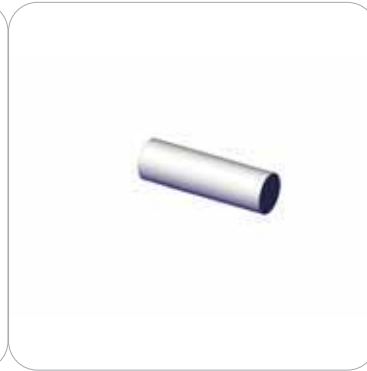
Tools, Components, & Connectors



FOOT x2



LEFT/RIGHT SIDE UPRIGHT POLES  
(includes top curved corner, 2 or 3  
upright poles and bottom base  
connector angle) x2 sides

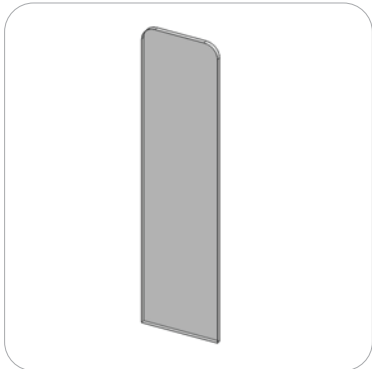


SMALL HORIZONTAL TOP SPACER  
(close up view for clarity) x1



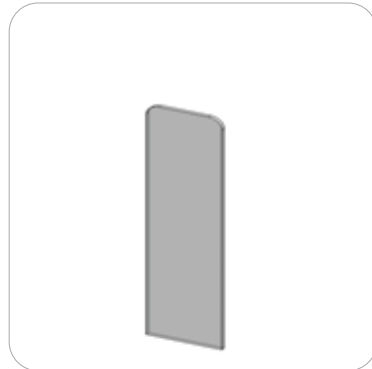
HORIZONTAL BOTTOM  
SUPPORT POLE x1

Clear Viewing Panel

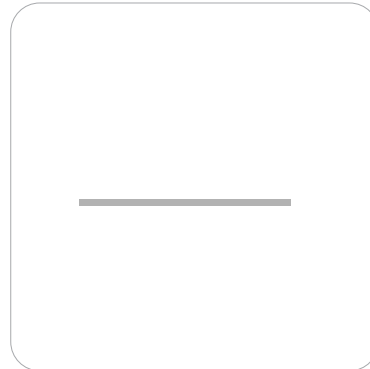


Tall (21.25" w x 88.5" h) x1

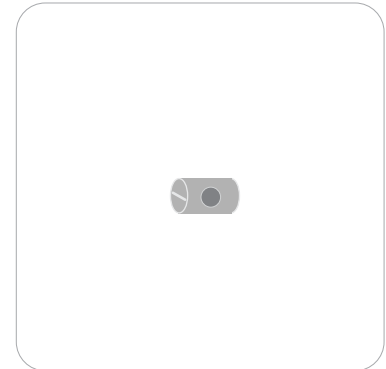
OR



Medium (21.25" w x 62.25" h) x1



Panel suspension cables x4

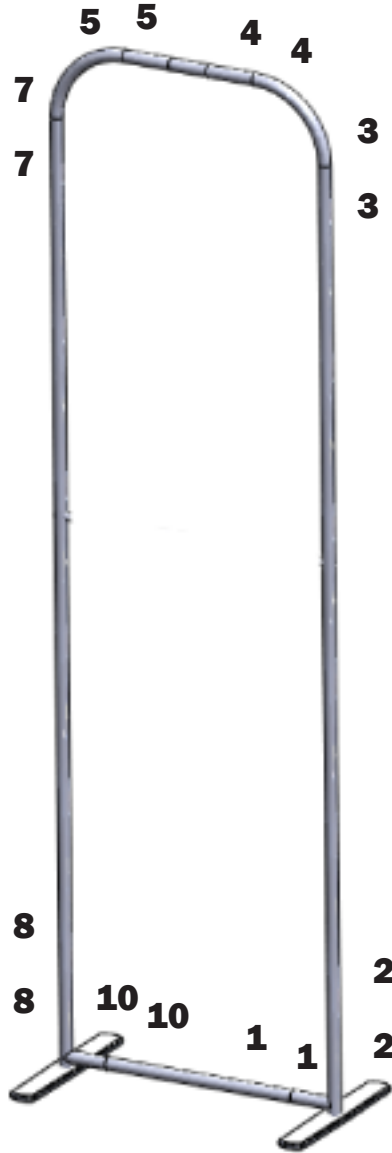


Cables screw locks x8

# Labelling Diagram

DSfs-24

**TALL  
HEIGHT**



**MEDIUM  
HEIGHT**



# Floor Screen Assembly

## Step 1:

Gather the components to build the frame. Lay the parts out on a clean floor surface with number-coded ends adjacent to each other as shown in the Labelling Diagram.

Connect the foot to the base post using the large screw. Just hand tighten for now so the foot can rotate on the post.



## Step 2:

Connect all the frame posts together as per the Labelling Diagram using the push-button connections. Make sure numbers match each other at connecting joints.



## Step 3:

With the frame assembled on the floor, rotate the feet so the frame can touch the floor all the way around.

Carefully place the clear panel (leave protective films on panel) inside the frame area and position it so there is equal space (about 1/2") all around it. Then in each corner, pull the small cable that is attached to the frame corner tube up and through the hole in that is in the clear panel. Repeat on all four corners.



## Step 4:

Using a small slot screwdriver, loosen the set screw on the end of the small cable grip enough to let the cable pass through.

Slip the cable grip over one of the corner cables, snug it up against the clear panel, and tighten the set screw on the cable grip to secure it in place. Repeat this process on all four corners.



## Step 5:

Carefully raise the frame up onto its feet and check to see that the panel is evenly suspended in the frame. If it's not, lay the frame back down and make minor adjustments by loosening, adjusting and re-tightening the cable grip set screws.

Once you're happy with it, fully tighten the screws underneath the feet using a large slot screwdriver, remove the protective liner film from both sides of the clear panel and you're done!

